


Staff responsible	Andy Taylor
Date of policy/last review	19/09/2018
Governing body ratified	19/09/2018
Chair of Governors – Liz Bailey	
Review cycle	1 year
Next review	19/09/2019

## 1. Introduction

---

- 1.1 At Brent Knoll School we have a primary responsibility for the care, welfare and safety of all pupils in our charge. We are committed to practice that protects children from harm. Brent Knoll School staff are advised to maintain an attitude of 'it could happen here' as far as safeguarding is concerned. When concerned about the welfare of a child, staff members should always act in the interest of the child.
- 1.2 We encourage a culture in which all staff believe safeguarding to be of the highest importance and understand that their vigilance is critical. We want all staff to feel confident to discuss their concerns with designated staff/Governors and have clear lines of protocol in place for how to do this.
- 1.3 At Brent Knoll School we explicitly teach pupils about safeguarding themselves in and outside of school, including online, through a broad and balanced curriculum. We establish and maintain a culture in which children feel secure, are encouraged to talk and are listened to.
- 1.4 This Safeguarding Policy applies to all staff, governors and volunteers working in school.

## 2. Context

---

- 2.1 This policy should be read alongside the following other policies:
- [Physical intervention and the use of reasonable force](#)
  - [Personal and intimate care](#)
  - [Complaints procedure](#)
  - [Anti-bullying policy](#)
  - [Whistle blowing](#)
  - [SEN policy](#)
  - [Behaviour policy](#)
  - [Complaints policy](#)
  - [Attendance Policy](#)
  - [Lewisham's Early Help Strategy](#)

### 3. Safeguarding and Child Protection Structure

TITLE	NAME	CONTACT
DSL – Designated Safeguarding Lead	<b>Acting Head teacher</b> – Andy Taylor	<a href="mailto:a.taylor@brentknollschool.co.uk">a.taylor@brentknollschool.co.uk</a>
<b>Deputy DSL</b> – Designated Safeguarding Lead	<b>Deputy Head teacher</b> – Sarah Lynch	<a href="mailto:s.lynch@brentknollschool.co.uk">s.lynch@brentknollschool.co.uk</a>
<b>Deputy DSL</b> – Designated Safeguarding Lead	<b>School Home Support Advisor</b> – Emma Moore	<a href="mailto:e.moore@brentknollschool.co.uk">e.moore@brentknollschool.co.uk</a>
<b>Governor</b> – Safeguarding Lead	<b>Deputy Chair of Governors</b> – Cassim Bakharia	<a href="mailto:c.bakharia@brentknollschool.co.uk">c.bakharia@brentknollschool.co.uk</a>
<b>Chair of Governors</b>	<b>Chair of Governors</b> Liz Bailey	<a href="mailto:l.bailey@brentknollschool.co.uk">l.bailey@brentknollschool.co.uk</a>
<b>Legal Framework</b>	Children Act 1989 (as amended 2004 Section 52) Children Act 2004 Children Schools and Families Act 2010 Education Act 2002 s175/s157 The Teachers Standards' 2012 The Counter Terrorism and Security Act 2015 (section 26 The Prevent Duty)	
<b>Statutory Guidance</b>	Keeping Children Safe in Education (September <b>2018</b> ) Working Together to Safeguard Children ( <b>July 2018</b> ) Children who run away or go missing from home/care (Jan 2014)	
<b>Department of Education and Local Advice and Guidance</b>	<b>What to do if you're worried a child is being abused (March 2015)</b> Information Sharing – Advice for practitioners Providing safeguarding services to children, young people, parents and carers (March 2015)	

### 4. Rationale & Aims

- 4.1 This policy has been developed in accordance with the principles established by the Children Act, 1989, the Education Act, 2002 and the statutory guidance: Keeping Children Safe in Education, 2018.
- 4.2 At Brent Knoll School we believe that the needs of the child are paramount. All children deserve the opportunity to achieve their full potential; they have the right to be protected from harm and exploitation whatever their race, religion, first language or ethnicity, gender or sexuality, age, health or disability, political or immigration status.
- 4.3 All staff accept their fundamental responsibility to keep pupils safe, promoting children's social, physical, emotional and moral development. All staff are trained to identify signs of abuse, and work to identify, assess, and support those children who are suffering harm. Staff will help to equip children with the skills needed to keep them safe.
- 4.4 There are three main elements to the child protection and safeguarding policy:
- PREVENTION through the teaching and pastoral support offered to pupils and the creation and maintenance of a whole school protective ethos.

- PROTECTION by following agreed procedures for identifying, monitoring and reporting cases, or suspected cases, of abuse; protecting children from unsuitable people.
- SUPPORT to victims of abuse and to staff in identifying signs and symptoms of abuse.

#### 4.5 Aims:

- To provide a caring environment in which children and young people feel safe, secure, valued and respected.
- To instil confidence so that pupils can trust adults and know how to approach staff if they are in difficulty.
- To raise awareness among all staff, both teaching and non-teaching, of the need to safeguard children through identification and prompt reporting of all possible cases of abuse.
- To ensure that rigorous systems of identification, reporting and monitoring are in place to protect all children from harm.
- To establish clear and effective channels of communication between staff, and to develop effective working relationships with all other agencies involved in safeguarding children including Children Social Care services, the police and health services.
- To ensure that all adults have appropriate checks and relevant safeguarding training completed before working with children.

## 5. Roles and Responsibilities

---

5.1 All adults working with children have a responsibility to protect children.

5.2 At Brent Knoll School, there are, however key people within school who have specific responsibilities.

<b>Designated Safeguarding Lead (DSL)</b>	<b>Deputy Designated Safeguarding Leads</b>	<b>Designated Governor for Safeguarding</b>
To attend Lewisham child protection training every two years. (Minimum requirement).	To attend Lewisham Child Protection refresher training every two years.	To access refresher Child Protection training every year.
To access refresher Child Protection training every year.	To access refresher Child Protection training every year.	Report to the governing body the number of cases (without names or details) of child protection issues in the school.
Deliver annual staff training according to the needs of the team and/or in response to current practices.	During initial meeting with new pupils – make parents aware of safeguarding policy.	Ensure safeguarding policy is reviewed annually.
Liaise with class teachers, learning mentors and other relevant staff to provide support for the child in school.	Monitor children on CP register and all 'live' concerns.	To oversee procedures relating to allegations made against the Head Teacher.
Liaise with agencies that support the child such as social care, Child and Adolescent Mental Health Services (CAMHS), Education Welfare Service and Educational Psychology service.	Receive current information for children on CP register weekly.	
	Lead/ attend TAF meetings as necessary.	

<p>Support or lead 'team around the family' (TAF) meetings and attend case conference reviews/ core group meetings.</p> <p>Ensure the safeguarding policy is reviewed, updated and enforced every year.</p> <p>To meet weekly with the Deputy/Assistant Heads to discuss on-going CP concerns.</p> <p>To meet half-termly with designated governor to discuss safeguarding.</p> <p>Ensure that relevant paperwork is copied and filed before being transferred to a pupil's new school.</p>	<p>To maintain good relations with the school community to ensure effective support and access to support.</p>	
---	--	--

### 5.3 The Head Teacher will:

- Ensure that all policies and procedures adopted by the Governing Body are fully implemented, and followed by the staff.
- Work towards establishing and maintaining a culture in school where all staff and volunteers feel able to raise concerns about poor or unsafe practice in regard to children. These concerns will be treated sensitively and proactively in line with the school's whistle-blowing policy.
- Ensure that all relevant training for all staff is up-to-date and reviewed annually.
- Ensure that all staff have received section 1 of Keeping Children Safe in Education and have signed to acknowledge they have read and understood its contents.
- Be the designated safeguarding lead and will regularly liaise with Deputy DSL's to ensure monitoring. Home School Support Worker and the Deputy Head are Deputy DSL's. In their absence the Assistant Headteachers should be notified.
- Heads will take on the following responsibilities. A designated Governor (Chair of Governors) is also identified.

### 5.4 The Designated Safeguarding Lead (DSL) will:

- Have received the appropriate official training, which will be undertaken every two years, and obtain access to resources and attend any relevant or refresher training courses.
- Ensure each member of staff has access to and understands the school's Safeguarding Policy and procedures, including new and part time staff. The DSL should ensure the school's policies are known and used appropriately.
- Ensure the safeguarding policy is available publicly and parents are aware of the fact that referrals about suspected abuse or neglect may be made and the role and responsibility the school has in this.
- Understand the assessment process for providing early help and intervention, for example through locally agreed common and shared assessment processes such as Early Help Assessments.
- Be able to keep detailed, accurate and secure written records of all concerns and referrals.
- Have a working knowledge of how local authorities conduct a Child Protection Case Conference and a Child Protection Review Conference and be able to attend and contribute to these effectively when required to do so.
- Be alert to the specific needs of children in need, our learners all have special educational needs/disability articulated in an Education and Health Care Plan and so are particularly vulnerable and be alert to young carers who also face particular challenges.

- Encourage a culture of listening to children among all staff.
- Act as a source of support, advice and expertise to staff on matters of safety and safeguarding and, when deciding whether to make a referral, liaise with the appropriate agencies.
- Refer all cases of suspected or alleged abuse or harm by a member of the school staff, colleague or volunteer known to work with children to the local authority children's social care and the LA Designated Officer (LADO)
- Ensure the school's safeguarding policy is reviewed annually, and the procedures and implementation are updated and reviewed regularly, working with the governing body regarding this.
- When pupils leave the school, ensure their child protection file is copied for any new school as soon as possible but transferred separately from the main pupil file.
- Ensure that safeguarding issues are regularly discussed at Governors, SLT and staff meetings.

5.5 The Governing Body at Brent Knoll School will ensure that:

- The school has a safeguarding policy in place and that procedures are in accordance with statutory and Local Authority (LA) guidance.
- The safeguarding policy is made available to parents.
- Safer recruitment procedures are used at all times, and all appropriate checks are carried out on staff and volunteers who work with children.
- The Designated Safeguarding Lead (DSL) with responsibility for safeguarding is a member of the senior leadership team.
- All staff have undertaken the appropriate safeguarding training.
- A nominated governor will have responsibility for liaising with the DSL, the LA and partner agencies.
- Oversee procedures for dealing with allegations of abuse against staff and volunteers that comply with guidance from the LA and locally agreed inter-agency procedures.
- Policies and procedures are reviewed annually, providing information to the LA about them and about how the above duties have been discharged.
- All members of the governing body will have a current DBS check.
- The Chair of Governors oversees appropriately anonymised LADO referral information as well as managing investigations into allegations made against the Headteacher

## 6. Child Protection Procedures and Guidelines

---

- 6.1 At Brent Knoll School, we fully recognise our responsibilities for child protection and strive to achieve an environment where children feel secure, supported and valued within and beyond the school gate.
- 6.2 We recognise that some children are the victims of neglect and/or physical, sexual or emotional abuse. Staff at school, by virtue of their day-to-day contact with and knowledge of the children in their care, are well placed to identify such abuse and to offer support to children in need.
- 6.3 All child protection concerns and referrals will be handled sensitively, professionally and in ways which support the needs of the child.
- 6.4 What is Child Protection?

Child Protection is one very important aspect of safeguarding. It refers to the activity which is undertaken to protect specific children who are suffering, or at risk of suffering, significant harm. Safeguarding, in addition to child protection, encompasses issues such as pupil health and safety, bullying/cyber-bullying, appropriate medical provision. These areas have specific policies and guidance which should be read in conjunction with this document.

- 6.5 What is significant harm?

The Children's Act 1989 introduced the concept of significant harm as the threshold that justifies compulsory intervention by statutory agencies in family life in the best interests of children. There are no absolute criteria on which to rely when judging what constitutes significant harm. Sometimes it might be a single traumatic event but more often it is a compilation of significant events which damage the child's physical and psychological development. Decisions about significant harm are complex and require discussion with the statutory agencies.

## 6.6 Responsibilities

The responsibility for child safeguarding falls on everybody who is employed at Brent Knoll School. All adults who work at Brent Knoll School are expected to support the Safeguarding Policy, with overall responsibility falling on the Headteacher. All staff, including volunteers have a statutory obligation to report to the DSL if there is suspicion of abuse/neglect of a child or if a child discloses abuse or allegations of abuse.

## 6.7 Recognising abuse

To ensure that our children are protected from harm, we need to understand what types of behaviour constitute abuse and neglect.

Abuse and neglect are forms of maltreatment. Somebody may abuse or neglect a child by inflicting harm, for example by hitting them, or by failing to act to prevent harm, for example by leaving a small child home alone, or leaving knives or matches within reach of an unattended toddler. There are four categories of abuse: physical abuse, emotional abuse, sexual abuse and neglect.

- Physical abuse - Physical abuse may involve hitting, shaking, throwing, poisoning, burning or scalding, drowning, suffocating or otherwise causing physical harm to a child. Physical harm may also be caused when a parent or carer fabricates the symptoms of, or deliberately induces illness in a child (this used to be called Munchausen's Syndrome by Proxy, but is now more usually referred to as fabricated or induced illness).
- Emotional abuse - Emotional abuse is the persistent emotional maltreatment of a child, such as to cause severe and persistent adverse effects on the child's emotional development. It may involve conveying to children that they are worthless or unloved, inadequate or valued only for meeting the needs of another person. It may feature age – or developmentally-inappropriate expectations being imposed on children. These may include interactions that are beyond the child's developmental capability, as well as overprotection and limitation of exploration and learning, or preventing the child participating in normal social interaction. It may involve seeing or hearing the ill-treatment of another. It may involve serious bullying, causing children frequently to feel frightened or in danger, or the exploitation or corruption of children. Some level of emotional abuse is involved in all types of maltreatment of a child, although it may occur alone.
- Sexual abuse - Sexual abuse involves forcing or enticing a child person to take part in sexual activities, including prostitution, whether or not the child is aware of what is happening. The activities may involve physical contact, including penetrative and non-penetrative acts. They may include non-contact activities, such as involving children in looking at, or in the production of, pornographic material or watching sexual activities, or encouraging children to behave in sexually inappropriate ways.
- Neglect - Neglect is the persistent failure to meet a child's basic physical and/or psychological needs, likely to result in the serious impairment of the child's health or development. Neglect may occur during pregnancy as a result of maternal substance misuse. Once a child is born, neglect may involve a parent or carer failing to provide adequate food and clothing or shelter, including exclusion from home or abandonment; failing to protect a child from physical and emotional harm or

danger; failure to ensure adequate supervision, including the use of inadequate care-takers; or the failure to ensure access to appropriate medical care or treatment. It may also include neglect of, or unresponsiveness to, a child's basic emotional needs.

(Definitions taken from Working Together to Safeguard Children)

- Bullying - While bullying between children is not a separate category of abuse and neglect, it is a very serious issue that can cause considerable anxiety and distress. At its most serious level, bullying is thought to result in up to 12 child suicides each year. All incidences of bullying should be reported and will be managed through our anti-bullying procedures. All pupils and parents receive a copy of the anti-bullying procedures on joining the school and the subject of bullying is addressed at regular intervals in the personal, social and health education (PSHE) curriculum. If the bullying is particularly serious, or the anti-bullying procedures are deemed to be ineffective, the head teacher and the DSL will consider implementing child protection procedures.

#### 6.8 Indicators of abuse and what you might see

Physical signs define some types of abuse, for example, bruising, bleeding or broken bones resulting from physical or sexual abuse, or injuries sustained while a child has been inadequately supervised. The identification of physical signs is complicated, as children may go to great lengths to hide injuries, often because they are ashamed or embarrassed, or their abuser has threatened further violence or trauma if they 'tell'. It is also quite difficult for anyone without medical training to categorise injuries into accidental or deliberate with any degree of certainty. For these reasons it is vital that staff are also aware of the range of behavioural indicators of abuse and report any concerns to the designated person.

Remember, it is your responsibility to report your concerns. It is not your responsibility to investigate or decide whether a child has been harmed or abused.

A child who is being harmed, abused and/or neglected may:

- have bruises, bleeding, burns, fractures or other injuries
- show signs of pain or discomfort
- keep arms and legs covered, even in warm weather
- be concerned about changing for PE or swimming
- look unkempt and uncared for
- change their eating habits
- have difficulty in making or sustaining friendships
- appear fearful
- be reckless with regard to their own or other's safety
- self-harm
- frequently miss school or arrive late
- show signs of not wanting to go home
- display a change in behaviour – from quiet to aggressive, or happy-go-lucky to withdrawn
- challenge authority
- become disinterested in their school work
- be constantly tired or preoccupied
- be wary of physical contact
- be involved in, or particularly knowledgeable about drugs or alcohol
- display sexual knowledge or behaviour beyond that normally expected for their age.

Individual indicators will rarely, in isolation, provide conclusive evidence of abuse. They should be viewed as part of a jigsaw, and each small piece of information will help the DSL to decide how to proceed. It is very important that you report your concerns – you do not need ‘absolute proof’ that the child is at risk. (See Appendix 1 for the ‘Reporting a Concern’ form.)

## 6.9 The impact of abuse

The impact of child abuse should not be underestimated. Many children do recover well and go on to lead healthy, happy and productive lives, although most adult survivors agree that the emotional scars remain, however well buried. For some children, full recovery is beyond their reach, and the rest of their childhood and their adulthood may be characterised by anxiety or depression, self-harm, eating disorders, alcohol and substance misuse, unequal and destructive relationships and long-term medical or psychiatric difficulties.

## 6.10 Taking action

There are four key steps to follow to help staff identify and respond appropriately to possible abuse and/or neglect.

1. Be alert
2. Question behaviours
3. Ask for help
4. Refer

It may not always be appropriate to go through all four stages sequentially, if a child is in immediate danger or is at risk of harm, the DSL must refer to police or social care without delay, so it is important staff share any concerns in a timely manner to ensure children are safe.

Staff members working with children are advised to maintain an attitude of ‘it could happen here’ where safeguarding is concerned.

When worried about the welfare of a child, staff members should always act in the interests of the child and report any concerns as per Brent Knoll School procedures as set out below.

You have a concern about a child / young person’s wellbeing, based on:

- Something the child/young person/parent has told you
- Something you have noticed about the child’s behaviour, health, or appearance
- Something another professional said or did

Even if you think your concern is minor, the DSL may have more information that, together with what you know, represents a more serious worry about a child. It is never your decision alone how to respond to concerns – but it is always your responsibility to share concerns, no matter how small. These should, wherever possible, be recorded directly as a ‘Snippet’ as this is an effective way of building a picture over time. Where direct input is not possible concerns should be written and handed to the DSL or deputies.

- Decide whether you need to find out more by asking the child / young person, or their parent to clarify your concerns, being careful to use open questions: beginning with words like: ‘how’, ‘why’, ‘where’, ‘when’, ‘who’?
- Let the child/young person/parent know what you plan to do next if you have heard a disclosure of abuse or you are talking with them about your concerns. Do not promise to keep what s/he tells you secret....for example, ‘I am worried about your



bruise and I need to tell Mr Taylor so that he can help us think about how to keep you safe'

- Inform the DSL immediately. If the DSL is not available, inform the Deputy DSLs. If neither are available, speak to the Principal or Vice Principals. If there is no other member of staff available, you must make the referral yourself.
- Make a written record as soon as possible after the event, noting:
  - a) Name of child
  - b) Date, time and place
  - c) Who else was present
  - d) What was said / What happened / What you noticed ... speech, behaviour, mood, drawings, games or appearance
  - e) If child or parent spoke, record their words rather than your interpretation
  - f) Analysis of what you observed and why it is a cause for concern

#### 6.11 If you suspect a child is at risk of harm

There will be occasions when you suspect that a child may be at serious risk, but you have no 'real' evidence. The child's behaviour may have changed, their artwork could be bizarre or you may have noticed other physical but inconclusive signs. In these circumstances, you should try to give the child the opportunity to talk. The signs you have noticed may be due to a variety of factors and it is fine to ask the child if they are alright or if you can help in any way.

Use the 'Snippet' form on BKSCConnect (see Appendix 1) to record these early concerns. If the child does begin to reveal that they are being harmed you should follow the advice in the section 'If a child discloses to you'.

If, following your conversation, you remain concerned; you should discuss your concerns with the DSL.

#### 6.12 If a child discloses information to you

It takes a lot of courage for a child to disclose that they are being neglected and or abused. They may feel ashamed, particularly if the abuse is sexual, their abuser may have threatened what will happen if they tell, they may have lost all trust in adults, or they may believe, or have been told, that the abuse is their own fault.

If a child talks to you about any risks to their safety or wellbeing you will need to let them know that you must pass the information on – you are not allowed to keep secrets. The point at which you do this is a matter for professional judgement. If you jump in immediately the child may think that you do not want to listen, if you leave it till the very end of the conversation, the child may feel that you have misled them into revealing more than they would have otherwise.

During your conversation with the child:

- Allow them to speak freely.
- Remain calm and do not over react – the child may stop talking if they feel they are upsetting you.
- Give reassuring nods or words of comfort – 'I'm so sorry this has happened', 'I want to help', 'This isn't your fault', 'You are doing the right thing in talking to me'.
- Do not be afraid of silences – remember how hard this must be for the child.

- Under no circumstances ask investigative questions – such as how many times this has happened, whether it happens to siblings too, or what does the child's mother think about all this.
- At an appropriate time tell the child that in order to help them you must pass the information on.
- Do not automatically offer any physical touch as comfort. It may be anything but comforting to a child who has been abused.
- Avoid admonishing the child for not disclosing earlier. Saying 'I do wish you had told me about this when it started' or 'I can't believe what I'm hearing' may be your way of being supportive but the child may interpret it that they have done something wrong.
- Tell the child what will happen next. The child may agree to go with you to see the designated person. Otherwise let them know that someone will come to see them before the end of the day.
- Report verbally to the designated person.
- Write up your conversation as soon as possible on the record of concern form and hand it to the designated person by way of a snippet. Documents can be attached to the snippet if necessary.
- Seek support if you feel distressed.

An illustration of the 'snippet' form is provided in Appendix 1. They are accessible via BKSCConnect in the 'Safeguarding' section. There is also a direct link from the landing page in BKSCConnect.

There are systems in place for children to express their views and give feedback about the measures in place to protect them

- Substantial time is allocated to PSHE where pupils are encouraged to express their views.
- Designated LSAs follow specific classes and gather pupils' views.
- A regular Pupil Forum provides an opportunity for pupils to express their views.
- The child's wishes and feelings are always taken into account when determining what action to take and what services to provide in response to a safeguarding concern.
- Pupils are taught about safeguarding, including online safety, as part of the curriculum in PSHE education and sex and relationship education. This is evidenced in curriculum handbooks, curriculum development plans and schemes of work.

### 6.13 Notifying parents

The school will normally seek to discuss any concerns about a child with their parents. This must be handled sensitively and the DSL will make contact with the parent in the event of a concern, suspicion or disclosure.

However, if the school believes that notifying parents could increase the risk to the child, or exacerbate the problem, then advice will first be sought from Children's Social Care.

### 6.14 Referral to children's social care

The DSL will make a referral to children's social care if it is believed that a child is suffering or is at risk of suffering significant harm. The child (subject to their age and understanding) and the parents will be told that a referral is being made, unless to do so would increase the risk to the child. (See 3.10 for details on how this referral can be made).

## 6.15 Confidentiality and sharing information

All staff will understand that child protection issues warrant a high level of confidentiality, not only out of respect for the child and staff involved but also to ensure that being released into the public domain does not compromise evidence.

Staff should only discuss concerns with the designated person, head teacher or chair of governors (depending on who is the subject of the concern). That person will then decide who else needs to have the information and they will disseminate it on a 'need-to-know' basis.

Child protection information will be stored and handled in line with General Data Protection Regulation (GDPR), 2018 principles. Information is:

- processed for limited purposes
- adequate, relevant and not excessive
- accurate
- kept no longer than necessary
- processed in accordance with the data subject's rights
- secure.

Record of concern forms and other written information will be stored in a locked facility and any electronic information will be password protected and only made available to relevant individuals.

Every effort should be made to prevent unauthorised access and sensitive information should not be stored on laptop computers, which, by the nature of their portability, could be lost or stolen. If it is necessary to store child protection information on portable media, such as a CD or flash drive, these items should also be kept in locked storage. Child protection information will be stored separately from the child's school file and the school file will be 'tagged' to indicate that separate information is held.

Child protection records are normally exempt from the disclosure provisions of GDPR, which means that children and parents do not have an automatic right to see them. If any member of staff receives a request from a child or parent to see child protection records, they should refer the request to the head teacher.

GDPR principles do not prevent school staff from sharing information with relevant agencies, where that information may help to protect a child. When information is shared, the reason for doing so as well as the reasons why consent may not have been sought, will be clearly documented within the child protection records.

When a child leaves the school their Child Protection files will be copied with the copies archived and stored securely for 7 years and the original securely packaged and transferred by hand to the new school. A signed document acknowledging receipt of the record will be requested from the new school/provision.

The school's policy on confidentiality and information-sharing is available to parents and children on request.

## 6.16 Team Around the Family (TAF)

There are children with additional needs, who may be vulnerable and showing early signs of abuse and/or neglect; their needs are not clear, not known or not being met. These children may be

subject to adult focused care giving. This is the threshold for a multi-agency early help assessment to begin – Level 2, Universal Plus.

These are children who require a lead professional for a co-ordinated approach to the provision of additional services such as family support services, parenting programmes and children's centres. These will be provided within universal or targeted services provision and do not include services from children's social care and will normally be facilitated by arranging a TAF meeting with the relevant professionals.

Parents/carers will always be contacted to discuss our concerns prior to making a decision to hold a TAF and their consent will be sought. However, if consent is not given and we maintain that there remain unmet needs of the child and there are safeguarding concerns of any natured, a TAF may still be held without the parent/carer consent.

During the TAF, an Early Help Assessment (EHA) will be made and this will enable us to make clear decisions about any help/support that may be needed and the next steps that should be taken. As part of the TAF process, the EHA will be revisited in six-weekly cycles as a very minimum, although if the needs change, this may happen sooner. At each meeting, a decision will be made as to the current needs for the child/family and how these are best met, including making decisions whether more intervention is needed or whether the current support can be stepped down.

#### 6.17 Reporting directly to child protection agencies

Referrals to Children's Social Care are only made for children with needs at Level 3 or 4 of the Continuum of Need. This is determined where children are identified as requiring specialist services in order to achieve or maintain a satisfactory level of health or development or to prevent significant impairment of their health and development and/or who are disabled. They may require longer term intervention from specialist services. In some cases these children's needs may be secondary to the adults needs. This is the threshold for an assessment led by children's social care under Section 17, Children Act 1989 although the assessments and services required may come from a range of provision outside of children's social care.

Staff with concerns should follow the reporting procedures outlined in this policy.

However, they may also share information directly with children's social care, police or the NSPCC if:

- the situation is an emergency and the DSL, their deputy, the head teacher and the chair of governors are all unavailable
- they are convinced that a direct report is the only way to ensure the child's safety.

#### 6.18 Making a MASH request

If, as a professional, you have safeguarding concerns or are requesting additional targeted early help, you can use the online MASH request form after reading the below information.

Please note that residents and other members of the public can still make referrals in person or over the phone.

All requests that come through the MASH will be triaged by the multi-agency team and you may be contacted by a professional representing your agency to discuss your request.

Before you make a request

- The following information will help you determine if you need to make a MASH request, and which part of the MASH request form you need to use:
- Our continuum of need document will help you assess the level of support needed or risks present. Professionals should refer to the continuum of need document before making a MASH request. This, along with some brief guidance, can be found on the MASH webpage and the LSCB website, links below.
- If you believe a child and their family need some additional support you should discuss this with the family first and agree who is best placed to provide that support. An early help assessment can help you get a full picture of the family's situation and plan how to meet that need.
- If you think a child or family has needs at the targeted level, which are not being met by services currently involved with the family, you can use the form to request help and support from the MASH.
- If you are a professional working with a child and you require supporting information from children's social care (e.g. CAFCASS, probation, housing conducting statutory safeguarding checks, assessments), use the form to request supporting information.
- If you are worried that a child is at risk of significant harm through abuse or neglect, please call the MASH immediately on 020 8314 9181 to discuss your concerns and then use the form to request child protection from the MASH.

#### 6.19 MASH / Early Help Consultation Service

To help professionals make the most informed decisions the MASH and Early Help Team will provide a professionals' advice line. This will be available for consultation from 9am – 5pm.

Where the child may need help and protection they will be given advice and guidance about making a referral, including how to involve parents. Professionals will also receive guidance on the need for parental consent/ recorded clarification needed as to why consent was overridden.

#### 6.20 During consultation professionals, should:

- Be clear about their concern and what is needed from the consultation
- Clearly identify what their organisation has already done about the concern and the impact of this
- Seek clarification where there are any uncertainties about what is involved
- In the case of the outcome of consultation being to make a referral, discuss the appropriateness of not seeking, or overriding parental consent.

The Consultation service aims to:

- Offer quick access via the telephone to Children's Safeguarding and Social Care advice
- Provide advice on Children's Safeguarding and Social Care threshold decision making i.e. S17 or S47 of the CA 1989
- Improve information sharing about universal and target services providing early help
- Allow professionals the opportunity to talk through situations (hypothetically if necessary) of concern to help determine an appropriate response, without the need for formal referral. This advice will be recorded to provide an audit trail.

How the Consultation Service works:

- Consultation will be offered by MASH Social worker/ Early help team and their professional partners for all professionals seeking advice about children who they are concerned about
- To undertake a consultation, professionals should telephone the MASH/ Early Help team on 02083146660. Professionals have the option to speak with their own service colleagues co-located in the MASH; who in turn will always be able to seek advice and guidance from social workers
- When concerns are raised about a child (ren) the MASH/ Early Help hub will record the consultation as a contact on the EHM database checking the child's details to ensure appropriate identification. An analysis of need, harm and risk issues will be carried out to provide early action, diversion or intervention to the child and his/ her family. Consent on these cases will always be recorded and considered
- Where professionals simply seek advice and or guidance on hypothetical cases they feel stuck with, the MASH or Early help staff members who provides the consultation will send an email as a follow up action and with the advice recorded. It is expected that the contacting professional follow the record keeping and information guidelines for their own agency, to record they have held a consultation. With hypothetical queries the MASH/ Early Help team will not contact the family but do expect professionals to discuss any concerns they have with the individuals who have parental responsibility for the child
- Professionals and their agencies are not obliged to follow the advice offered, however staff within the MASH/ Early Help team will escalate concerns in line with the London Safeguarding Children Procedures where they feel safeguarding activity is required and advice is not followed
- If following consultation more information becomes known or the situation changes, a professional can seek further clarity by calling the consultation line at any time.
- Alternatively, if they feel that the response they have received does not meet the needs of the child/family or leaves a child at risk of harm, they can still make a referral in the usual way or escalate their concerns through their organisations safeguarding process.

#### 6.21 Using the Local Children Safeguarding Board (LSCB) continuum of need guidance

The Lewisham Safeguarding Children Board (LSCB) has developed a document following consultation with partners in October 2016, for professionals to determine the levels of need when making a judgement and assessment of the child and their family. This document provides advice and guidance regarding the level of support and intervention children and their families may require.

Before making a referral to the MASH professionals should consider if the needs identified can be met within their own agency, or by other professionals already involved with the family. This is usually relevant for children who have universal or additional needs, this is often referred to as Level 1 or 2 support as demonstrated in the LSCB Levels / Continuum of Need Document.

Professionals should seek to discuss any concerns they have with the parents/carers who have parental responsibility, are caring for the child by way of private fostering arrangements (or under a statutory regulation) and inform them that they are making a referral to the MASH when new safeguarding concerns arise or no change is affected within existing plans. This should only be done where such discussions will not place a child at increased risk of significant harm or cause any significant delay.

The Continuum of Need can be accessed here: [Lewisham Continuum of Need document](#)

The Continuum of Need Guidance Document can be accessed here: [Continuum of Need guidance](#)

## 6.22 Identifying a child in need of help/ support or protection

A referral to the MASH should be made when a child or family needs support identified as Targeted/Specialist and/or where safeguarding concerns have been identified. This is often referred to as Level 3 or 4 support. To assist professionals with the identification and articulation of the need, harm or risk issues, the continuum of need is divided into 4 levels.

This document can be found here:

[www.safeguardinglewisham.org.uk](http://www.safeguardinglewisham.org.uk) and additional information including the link to the online request form can be found on the Lewisham MASH Webpage: [www.lewisham.gov.uk/MASH](http://www.lewisham.gov.uk/MASH)

Contact:

Multi-agency Safeguarding Hub (MASH) Tel: 020 8314 6660

Email: [mashagency@lewisham.gov.uk](mailto:mashagency@lewisham.gov.uk); [mashgcsx@lewisham.gcsx.gov.uk](mailto:mashgcsx@lewisham.gcsx.gov.uk)

Opening hours: Monday–Friday 9am–5pm.

If you have concerns about the welfare of a child outside these hours, please contact the emergency duty team on 020 8314 6000 and ask to speak to the out-of-hours duty social worker

## 6.23 Female genital mutilation (FGM)

At Brent Knoll School we believe that all our pupils should be kept safe from harm. FGM affects girls particularly from North African countries, including Egypt, Sudan, Somalia and Sierra Leone.

It is illegal in the United Kingdom to allow girls to undergo female genital mutilation either in this country or abroad. People guilty of allowing FGM to take place are punished by fines and up to fourteen years in prison.

At Brent Knoll School we have a duty to report concerns we have about girls at risk of FGM to the police and social services.

FGM occurs mainly in Africa and to a lesser extent, in the Middle East and Asia. Although it is believed by many to be a religious issue, it is a cultural practice. There are no health benefits.

Communities particularly affected by FGM in the UK include girls from:

Somalia, Kenya, Ethiopia, Sierra Leone, Sudan, Egypt, Nigeria, Eritrea, Yemen, Indonesia and Afghanistan.

In the UK, FGM tends to occur in areas with larger populations of communities who practise FGM, such as first-generation immigrants, refugees and asylum seekers. These areas include: London, Cardiff, Manchester, Sheffield, Northampton, Birmingham, Oxford, Crawley, Reading, Slough and Milton Keynes. In England and Wales, 23,000 girls under 15 could be at risk of FGM.

Key Points:

- Not a religious practice
- Occurs mostly to girls aged from 5 – 8 years old; but up to around 15

- Criminal offence in UK since 1985
- Offence since 2003 to take girls abroad
- Criminal penalties include up to 14 years in prison

Reasons for this cultural practice include:

- Cultural identity – An initiation into womanhood
- Gender Identity – Moving from girl to woman – enhancing femininity
- Sexual control – reduce the woman's desire for sex
- Hygiene/cleanliness – un mutilated women are regarded as unclean

Risk Factors include:

- low level of integration into UK society
- mother or sister who has undergone FGM
- girls who are withdrawn from PSHE
- a visiting female elder from the country of origin
- being taken on a long holiday to the family's country of origin
- talk about a 'special' event or procedure to 'become a woman'

High Risk Time

This procedure often takes place in the summer, as the recovery period after FGM can be 6 to 9 weeks. Schools should be alert to the possibility of FGM as a reason why a girl in a high risk group is absent from school or where the family request an 'authorised absence' for just before or just after the summer school holidays.

Although, it is difficult to identify girls before FGM takes place, where girls from these high risk groups return from a long period of absence with symptoms of FGM, advice should be sought from the police or social services.

Post-FGM Symptoms include:

- difficulty walking, sitting or standing
- spend longer than normal in the bathroom or toilet
- unusual behaviour after a lengthy absence
- reluctance to undergo normal medical examinations
- asking for help, but may not be explicit about the problem due to embarrassment or fear.

Longer Term problems include:

- difficulties urinating or incontinence
- frequent or chronic vaginal, pelvic or urinary infections
- menstrual problems
- kidney damage and possible failure
- cysts and abscesses
- pain when having sex
- infertility
- complications during pregnancy and childbirth
- emotional and mental health problems

The Serious Crime Act 2015 sets out a duty on professionals (including teachers) to notify police when they discover that FGM appears to have been carried out on a girl under 18. In schools, this will usually come from a disclosure.



Teachers must personally report to the police cases where they discover that an act of FGM appears to have been carried out; and discuss any such cases with the safeguarding lead and children's social care. The duty does not apply in relation to at risk or suspected cases.

At Brent Knoll School, if we have concerns about FGM, we will discuss these with parents/carers where appropriate, and the young person concerned, before taking any further action. In cases where it is deemed likely that discussing preliminary concerns with the family may put a child(ren) at risk of any kind, we may not discuss this with parents/carers before reporting to the relevant authorities.

#### 6.24 Forced Marriage/Honour Based Violence

A child who is being forced into marriage is at risk of significant harm through physical, sexual and emotional abuse. Significant harm is defined as a situation where a child is suffering, or is likely to suffer a degree of physical, sexual and / or emotional harm (through abuse or neglect), which is so harmful that there needs to be compulsory intervention by child protection agencies into the life of the child and their family.

The reasons given by parents who force their children to marry include protecting their children, building stronger families, strengthening family links, protecting family honour (e.g. promiscuity or homosexuality), retaining or acquiring wealth, appeasement etc.

Suspicious that a child may be forced into marriage may arise in a number of ways, including:

- A family history of older siblings leaving education early and marrying early;
- Depressive behaviour including self-harming and attempted suicide;
- Unreasonable restrictions such as being kept at home by their parents ('house arrest') or being unable to complete their education;
- A child being in conflict with their parents;
- A child going missing / running away;
- A child always being accompanied including to school and doctors' appointments;
- A child talking about an upcoming family holiday that they are worried about, fears that they will be taken out of education and kept abroad; or
- A child directly disclosing that they are worried s/he will be forced to marry.

Information about a forced marriage may come from one of the child's peer group, a relative or member of the child's local community, from another professional or when other family issues are addressed, such as domestic violence between parents.

Situations where a child fears being forced into marriage have similarities with both domestic violence and honour based violence. Forced marriage may involve the child being taken out of the country (trafficked) for the ceremony, is likely to involve non-consensual and/or underage sex, and refusal to go through with a forced marriage has sometimes been linked to so-called 'honour killing'.

Professionals should respond in a similar way to forced marriage as with domestic violence and honour based violence (i.e. in facilitating disclosure, developing individual safety plans, ensuring the child's safety by according them confidentiality in relation to the rest of the family, completing individual risk assessments etc).

#### 6.25 Domestic Violence (DV)

Any incident or pattern of incidents of controlling, coercive or threatening behaviour, violence or abuse between those aged 16 or over who are or have been intimate partners or family members

regardless of gender or sexuality. This can encompass but is not limited to the following types of abuse:

- psychological
- physical
- sexual
- financial
- emotional

In extreme cases this could include murder.

Controlling behaviour is a range of acts designed to make a person subordinate and/or dependent by isolating them from sources of support, exploiting their resources and capacities for personal gain, depriving them of the means needed for independence, resistance and escape and regulating their everyday behaviour.

Coercive behaviour is an act or a pattern of acts of assault, threats, humiliation and intimidation or other abuse that is used to harm, punish, or frighten their victim.

Children and young people witnessing domestic abuse

Witnessing domestic abuse is really distressing and scary for a child, and causes serious harm. Children living in a home where domestic abuse is happening are at risk of other types of abuse too. Children can experience domestic abuse or violence in lots of different ways. They might:

- see the abuse
- hear the abuse from another room
- see a parent's injuries or distress afterwards
- be hurt by being nearby or trying to stop the abuse

Teenagers experiencing domestic abuse

Domestic abuse can happen in any relationship, and it affects young people too.

They may not realise that what's happening is abuse. Even if they do, they might not tell anyone about it because they're scared of what will happen, or ashamed about what people will think.

It's often difficult to tell if domestic abuse is happening, because it usually takes place in the family home and abusers can act very differently when other people are around.

Children who witness domestic abuse may:

- become aggressive
- display anti-social behaviour
- suffer from depression or anxiety
- not do as well at school - due to difficulties at home or disruption of moving to and from refuges.

Where potential cases of Domestic Violence are identified, the school will conduct an assessment using the Domestic Abuse Stalking and Harrassment (DASH) Risk Indicator Checklist. Information relating to this can be accessed [Via the 'safelives' website](#) If a case causes enough concern following this assessment, the Designated Safeguarding Lead (DSL), will make the necessary referral(s) on to other appropriate agencies.

## 6.26 Child sexual exploitation (CSE)

Child sexual exploitation is a form of child sexual abuse. It occurs where an individual or group takes advantage of an imbalance of power to coerce, manipulate or deceive a child or young person under the age of 18 into sexual activity (a) in exchange for something the victim needs or wants, and/or (b) for the financial advantage or increased status of the perpetrator or facilitator. The victim may have been sexually exploited even if the sexual activity appears consensual. Child sexual exploitation does not always involve physical contact; it can also occur through the use of technology.

This involves exploitative situations, contexts and relationships where young people receive something (for example food, accommodation, drugs, alcohol, gifts, money or in some cases simply affection) as a result of engaging in sexual activities. Sexual exploitation can take many forms ranging from the seemingly 'consensual' relationship where sex is exchanged for affection or gifts, to serious organised crime by gangs and groups. What marks out exploitation is an imbalance of power in the relationship. The perpetrator always holds some kind of power over the victim which increases as the exploitative relationship develops. Sexual exploitation involves varying degrees of coercion, intimidation or enticement, including unwanted pressure from peers to have sex, sexual bullying including cyberbullying and grooming. However, it is also important to recognise that some young people who are being sexually exploited do not exhibit any external signs of this abuse.

A common feature of CSE is that the child or young person does not recognise the coercive nature of the relationship and does not see themselves as a victim of exploitation. This means that they are unlikely to report the abuse so police and partners must be alert to the signs of CSE and actively look for victims. CSE can also occur through the use of technology without the child's immediate recognition; for example being persuaded to post images on the internet/ mobile phones without immediate payment or gain.

Staff should be aware of the key indicators of children being sexually exploited which can include:

- going missing for periods of time or regularly coming home late;
- regularly missing school or education or not taking part in education;
- appearing with unexplained gifts or new possessions;
- associating with other young people involved in exploitation;
- having older boyfriends or girlfriends;
- suffering from sexually transmitted infections;
- mood swings or changes in emotional wellbeing;
- drug and alcohol misuse; and
- displaying inappropriate sexualised behaviour.

Staff should also be aware that many children and young people who are victims of sexual exploitation do not recognise themselves as such.

There are three main types of child sexual exploitation:

- Inappropriate relationships:  
Usually involves just one abuser who has inappropriate power – physical, emotional or financial – or control over a young person. The young person may believe they have a genuine friendship or loving relationship with their abuser.
- Boyfriend/Girlfriend:  
Abuser grooms victim by striking up a normal relationship with them, giving them gifts and meeting in cafés or shopping centres. A seemingly consensual sexual relationship

develops but later turns abusive. Victims may be required to attend parties and sleep with multiple men/women and threatened with violence if they try to seek help.

## 6.27 Organised exploitation and trafficking

Trafficking involves the recruitment, transportation and exploitation of women and children for the purposes of prostitution and domestic servitude across international borders and within countries

Victims are trafficked through criminal networks – often between towns and cities – and forced or coerced into sex with multiple men. They may also be used to recruit new victims. This serious organised activity can involve the buying and selling of young people.

Also, modern slavery encompasses human trafficking, as defined in the UN Palermo Protocol and the Council of Europe Convention and as made illegal in UK legislation under the Sexual Offences Act 2003 and the Asylum and Immigration (Treatment of Claimants) Act 2004. It also includes cases of slavery and servitude as made illegal in the Coroners and Justice Act 2009, which criminalises holding a person in slavery or servitude or requiring a person to perform forced or compulsory labour. When referring to modern slavery, it encompasses all of the forms of human trafficking, slavery and servitude that have been defined in national and international laws and agreements.

Signs that a child has been trafficked may not be obvious but you might notice unusual behaviour or events. These include a child who:

- spends a lot of time doing household chores
- rarely leaves their house, has no freedom of movement and no time for playing
- is orphaned or living apart from their family, often in unregulated private foster care
- lives in substandard accommodation
- isn't sure which country, city or town they're in
- is unable or reluctant to give details of accommodation or personal details
- might not be registered with a school or a GP practice
- has no documents or has falsified documents
- has no access to their parents or guardians
- is seen in inappropriate places such as brothels or factories
- possesses unaccounted for money or goods
- is permanently deprived of a large part of their earnings, required to earn a minimum amount of money every day or pay off an exorbitant debt
- has injuries from workplace accidents
- gives a prepared story which is very similar to stories given by other children.

Our procedures for responding to concerns about students at risk of or victims of modern slavery are informed by the statutory DfE guidance 'Care of unaccompanied migrant child and child victims of modern slavery, published in November 2017. All concerns about students who may be being trafficked should be passed straight to the DSL on our standard concerns form.

If colleagues have concerns about any students at risk of CSE, they should ensure that their concerns are passed promptly on to the DSL so that a referral is made to the Operational MET. Any school can complete a referral to this mailbox:

[PL-CSEReferrals@met.pnn.police.uk](mailto:PL-CSEReferrals@met.pnn.police.uk)

The referrer would be expected to attend the Tuesday meeting to answer any questions and be part of the plan on how to deal with it.

## 6.28 Peer on Peer abuse including 'sexting' and children displaying Harmful Sexual Behaviours

Peer on peer abuse can take many forms including physical, sexual (e.g. inappropriate touching) and emotional abuse (including bullying). Department for Education (DfE).

September 2018: Keeping children safe in education; statutory guidance for schools and colleges, makes it clear that abuse is abuse and should never be tolerated or passed off as 'banter' or part of 'growing up. The Equality Act 2010 replaced previous anti-discrimination laws with a single Act.

A key provision was a new public sector Equality Duty, which came into force on 5 April 2011. This requires the school/college to:

- Eliminate unlawful discrimination, harassment, victimisation and any other conduct prohibited by the act
- Advance equality of opportunity between people who share a protected characteristic (age, disability, gender reassignment, pregnancy and maternity, race, religion or belief, sex and sexual orientation) and people who do not share it
- Foster good relations between people who share a protected characteristic and people who do not share it.

Peer on peer abuse often involves an imbalance of power between the perpetrator and the victim. This could involve perpetrators having control over the relationship which makes it difficult for those they abuse to defend themselves. This imbalance of power can manifest itself in several ways. It may be physical, psychological (knowing what upsets someone), or social (e.g. isolating or excluding someone). It could also include issues such as revenge porn or what are often gender issues (e.g. girls being touched or boys being involved in initiation activities).

At Brent Knoll School we believe that all children have the right to attend school and learn in a safe environment. Children should be free from harm by adults in the school and other students.

We recognise that some students will sometimes negatively affect the learning and wellbeing of others and their behaviour will be dealt with under the school's Behaviour and Anti-Bullying Policies where necessary. However, there will be occasions when a child's behaviour warrants a response under child protection rather than anti-bullying procedures. In particular, research suggests that up to 30 per cent of child sexual abuse is committed by someone under the age of 18.

Child Protection issues raised in this way may include physical abuse, emotional abuse, sexual abuse and sexual exploitation. It is likely that to be considered a safeguarding allegation against a pupil, some of the following features will be found.

The allegation:

- is made against an older pupil and refers to their behaviour towards a younger pupil or a more vulnerable pupil
- is of a serious nature, possibly including a criminal offence
- raises risk factors for other pupils in the school
- indicates that other pupils may have been affected by this student
- indicates that young people outside the school may be affected by this student

The management of children and young people with sexually harmful behaviour is complex and the school will work with other relevant agencies to maintain the safety of the whole school community. Young people who display such behaviour may be victims of abuse themselves and the child protection procedures will be followed for both victim and perpetrator. At Brent Knoll School we will support the victims of peer on peer abuse by following DfE guidance 'Sexual Violence and sexual

harassment between children in schools and colleges', first published in December 2017 [insert how else this will be done in your setting].

## Sexting

In cases of 'sexting' we follow guidance given to schools and colleges by the UK Council for Child Internet Safety (UKCCIS) published in August 2016: 'Sexting in schools and colleges, responding to incidents, and safeguarding young people'.

[Guidance](#)

## 6.29 Preventing Radicalisation

### 'Channel' and 'Prevent'

As part of the Counter Terrorism and Security Act 2015, schools have a duty to 'prevent people being drawn into terrorism'. This has become known as the 'Prevent Duty'. Channel, a key element of the Home Office's "Prevent" strategy, is a multi-agency approach to protect people at risk from radicalisation. As a school we will work with the local authority, local law enforcement, and religious and community leaders, to identify children vulnerable to radicalisation, and to stamp out extremism if it arises. This includes identifying pupils:

- Displaying feelings of grievance and injustice
- Feeling under threat
- Searching for identity, meaning and belonging
- Who have a desire for status amongst their peers
- Shows empathy for extremist causes
- Glorifying violence, especially other faiths or cultures
- Who have a desire for excitement and adventure
- Displaying a need to dominate and control others
- Who have a susceptibility to indoctrination
- Displaying a radical desire for political or moral change
- Who are susceptible to opportunistic involvement
- Who have family or friends involved in extremism
- Susceptible to being influenced or controlled by a group
- With relevant mental health issues
- Secretive behaviour
- Advocating messages similar to illegal organisations or other extremist groups

We will always take allegations and concerns of radicalisation and/or terrorism seriously. We will help pupils channel their desire for excitement and adventure into suitable and healthy activities. Radicalisation and extremism can be wider than religious beliefs and linked affiliations and can include radicalisation around far right groups and also by criminal groups connected with gang activity.

We will work with local religious and cultural organisations to instil a strong sense of identity in our pupils, as well as a clear place and purpose within the school. We use the curriculum to ensure that children and young people understand how people with extreme views share these with others, especially using the internet.

We will establish appropriate filters to protect children from terrorist and extremist material online.

Our school is stronger thanks to our open, multi-cultural and multi-faith community. We will always aim to integrate and engage every child within the school community, and in the wider community.

We will celebrate a range of different religious and cultural festivals across the year, giving every child the opportunity to take part.

We will monitor and assess incidents which suggest pupils are engaging, or are at risk of engaging in, extremist activity and/or radicalisation.

Where staff are concerned that children and young people are developing extremist views or show signs of becoming radicalised in any way, they should discuss this with the DSL.

## 7. Safer Working Practices

---

### 7.1 Safer Recruitment

Brent Knoll School recognises that sometimes people who want to cause harm to children actively seek employment that provides them access to young people.

The school will protect our pupils from having to come into contact with people with the propensity to cause harm by thorough and rigorous scrutiny of all applications. We will:

- Verify applicant's identity
- Check applicants qualifications/experience/ employment/history
- Obtain professional and character references
- Check applicant's health and physical capacity to undertake the job
- Hold a face-to-face interview for all candidates with at least one member of the Brent Knoll School panel who has attended safer recruitment training
- Ensure all adults in regulated activity with the children have been DBS checked and barred list checked.
- Make staff aware of their contractual, legal, administrative and pastoral responsibilities. A key document to support staff's understanding in this area is 'Keeping Children Safe in Education' (2018) which will be made available to all staff.

In recruiting and appointing staff, the Head Teacher and the School's Governing body have key responsibilities to create a culture of safe recruitment and, as part of that, adopt recruitment procedures that help deter, reject or identify people who might abuse children.

### 7.2 Employees: Advertising / Shortlisting / Interviews

We ensure that the advertisement makes clear the School's commitment to safeguarding and promoting the welfare of children.

All job descriptions make reference to the responsibility for safeguarding and promoting the welfare of children.

All person specifications include specific reference to suitability to work with children.

We ask for written information about previous employment history and check that information is not contradictory or incomplete. If a candidate for a teaching post is not currently employed as a teacher, we will check with the school, college or local authority at which they were most recently employed, to confirm details of their employment and their reasons for leaving.

We will always seek at least two references to obtain objective and factual information to support our appointment decisions. These will be scrutinised and any concerns need to be resolved satisfactorily, before the appointment can be confirmed.

We endeavour to seek references on all short-listed candidates, including internal ones, before interview, so that any issues of concern they raise can be explored further with the referee, and taken up with the candidate at interview.

We will always request references directly from the referee and employers and will not rely on open references, for example in the form of 'to whom it may concern' testimonials.

On receipt, references will be checked by the Head Teacher to ensure that all specific questions have been answered satisfactorily. The referee should be contacted to provide further clarification as appropriate: for example if the answers are vague. They should also be compared for consistency with the information provided by the candidate on their application form. Any discrepancies will be taken up with the candidate.

Any information about past disciplinary action or allegations will be considered carefully when assessing the applicant's suitability for the post; including information obtained from records held on the Database of Qualified Teachers (DQT). The DQT is maintained by the Teaching Regulation Agency (TRA) which is an executive agency of the Department for Education (DfE). We verify that the successful applicant has all the academic or vocational qualifications claimed.

We check his or her previous employment history and experience.

We conduct a face-to-face interview that explores the candidate's suitability to work with children as well as his or her suitability for the post.

We verify the successful applicant's identity, when they arrive for an interview.

### 7.3 Offer of appointment

An offer of appointment to a successful candidate, including one who has lived or worked abroad, will be conditional upon satisfactory completion of our pre-employment checks.

Before new staff are appointed, we will:

- Verify a candidate's identity from current photographic ID and proof of address;
- Obtain a certificate for an enhanced DBS check with a barred list information where the person will be engaging in regulated activity;
- Obtain a separate barred list check if an individual will start work in regulated activity before the DBS certificate is available;
- Check that a candidate to be employed as a teacher is not subject to a prohibition order issued by the Secretary of State, using the NCTL Teacher Service Portal (formerly known as the Employer Access Online service);
- Verify the candidate's mental and physical fitness to carry out their work responsibilities. This is done through the council's occupational health services;
- Verify professional qualifications, as appropriate.

### 7.4 Disqualification by Association

In November, 2014, Non-statutory advice was issued by the DfE, to supplement Keeping Children Safe in Education. It concerns how staff can be disqualified by association with others and explains



the effect of the Childcare (Disqualification) Regulations 2009. The advice applies to staff in schools who work in early years' provision and to those who work in later years provision for children who have not attained the age of 8. It also applies to employees who are directly concerned in the management of such provision even though they may not work in the early years or relevant later years provision themselves. Later years' provision covers childcare that is provided outside of school hours including breakfast clubs and after school care.

The supplementary advice reminds schools that they may not allow people to work in these settings or to be directly concerned in their management, if they or others in their households are "disqualified".

The grounds for disqualification are not only that a person is barred from working with children (included on the children's barred list) but also include, in summary, that: they have been cautioned for, convicted of or charged with certain violent and sexual criminal offences against children and adults, at home or abroad.

- Other orders have been made against them relating to their care of children
- They have had their registration cancelled in relation to childcare or children's homes or have been disqualified from private fostering
- They are living in the same household where another person who is disqualified lives. Disqualification occurs as soon as the above criteria are met, for example, as soon as a caution or conviction occurs, even before the person is formally included on the children's barred list. However, there are two points to bear in mind: the person is not guilty of an offence if they do not know a person they are living with is disqualified for example if your staff member lives in shared housing. If the member of staff lives in shared housing and does not have any knowledge about the people they live with, including whether those people are disqualified, neither your member of staff nor the school has any legal requirement to seek this type of information.
- The law is clear that this issue centres on 'knowingly employing' an individual who is disqualified. Schools who regularly ask staff to confirm there are no changes in their circumstances and act on information received with regards to a staff member's suitability can be seen to be taking reasonable and appropriate steps to ensure they do not knowingly employ someone who is disqualified.

The action we are required to make:-

To identify people caught by the "by association" rule, which requires that we ask existing employees working in the early and later years provision and those who are directly concerned in the management of such provision to provide the relevant information about themselves or a person who lives or works in the same household as them. It is recommended by the supplementary advice that this is done by way of self-declaration. In future we will be asking for this information as part of the pre-employment checks we undertake on appointing new staff. Staff caught by the 'by association' rule may be able to apply to Ofsted for a waiver of disqualification but such staff may not be used unless and until such waiver.

#### 7.5 Additional checks on individuals who have lived or worked outside the UK:

Individuals who have lived or worked outside the UK must undergo the same checks as all other staff. In addition, we will make any further checks we think appropriate so that any relevant events that occurred outside the UK can be considered.

We will verify the person's right to work in the UK. If there is uncertainty about whether an individual needs permission to work in the UK, we will follow the council's guidance and the advice on the GOV.UK website.

We will use the DQT to provide restriction information about teachers from the European Economic Area (EEA) and these checks will be recorded for staff from these countries.

All schools have a statutory duty under the new Home Office guidance issued on 6 April 2017, which states that:

"All Tier 2 (General) visa applicants who want to work in specified health, education or social care sectors must provide a criminal record certificate and so for all new appointments, schools must consider additional checks, including obtaining a Certificate of Good Conduct, where staff have ever lived or worked abroad".

The requirement is applicable to all \*Tier 2 (General) staff from any country (excluding the United Kingdom and Northern Ireland), where an individual has lived or worked for more than 12 months+ either in total or continuously as well as within the previous 5 years.

In Lewisham local authority, all new employees who declare that they have ever lived or worked outside the UK for more than 12 months+ either in total or continuously since the age of 18 years, will be risk assessed before making a decision as to whether further checks are appropriate in accordance with statutory guidance in Keeping Children Safe in Education 2018. It is not a legal requirement for existing staff who have ever lived or worked abroad for 12 months+ in total or continuously since the age of 18 years, but the governing body and senior leadership at Brent Knoll School have made the decision that we will not risk assess existing staff to make a decision whether or not we will pursue overseas criminal records checks for existing members of staff, volunteers or governors.

## 7.6 Single Central Record

We keep a single central record for the school. Generally, the information to be recorded is whether or not the following checks have been carried out or certificates obtained, and the date on which the checks were completed:

- an identity check;
- a barred list check;
- an enhanced DBS check;
- a prohibition from teaching check;
- further checks on people living or working outside the UK;
- a check of professional qualifications; and
- a check to establish the person's right to work in the United Kingdom.

The single central record will cover the following people:

- all staff (including supply staff) who work at the school
- all others who work in regular contact with children in the school including volunteers.
- Governors

In order to comply with the requirements of the Data Protection Act, we will not retain a copy of the individual's Disclosure and Barring Service (DBS) Certificate. However, copies of other documents used to verify the successful candidates identity, right to work and required qualifications will be kept on their personnel file.

## 7.7 Visiting Professionals/Agency Workers/Third Party Staff

We only use supply agencies that are able to provide full written vetting information about their staff prior to them starting work at the school.

The vetting information must contain the following:

- Photograph
- ID Evidence
- Teaching Agency Check
- DfE and Welsh Assembly Number
- Qualification Evidence
- Medical Check
- Barred List Check and Date
- Valid DBS Date
- Enhanced DBS number
- Further Disclosure Information, if necessary
- Right to work in the UK Check
- Overseas Checks/Risk Assessment
- References Check
- CV History Check

We ask supply agencies to email the vetting information to the School Business Manager as well as to the school receptionist

The school's receptionist checks this evidence on arrival, checking that the person presenting themselves for work is the same person on whom the checks have been made.

Any discrepancies will be reported to the Business Manager immediately and the agency staff will not be able to start their work until satisfactory checks have been concluded.

Safer Recruitment records of regular agency workers are included in the school's Single Central Record.

We provide an induction for supply staff, which includes safeguarding and a briefing on any vulnerable children they will be working with.

## 7.8 Trainee/Student Teachers

Initial Teacher Training Students, e.g. Schools Direct Students, who are salaried by the school, have to undergo the same safer recruitment checks as regular staff, before they can start working for the school.

Safer Recruitment records for Initial Teacher Training Students, e.g. Schools Direct Students, who are salaried by the school, are included in the school's Single Central Record.

Where trainee teachers are fee-funded, it is the responsibility of the Training Provider to carry out the necessary checks.

## 7.9 Regulated Activity

A person will be considered to be in 'regulated activity' if as a result of their work they:

- will be responsible, on a regular basis, in any setting for the care or supervision of children; or
- will regularly work in a school or college at times when children are on school or college premises (where the person's work requires interaction with children, whether or not the work is paid (unless they are a supervised volunteer), or whether the person is directly employed or employed by a contractor);

All visiting professionals e.g. PE coaches, Music teachers, Health Professionals and LA advisors have to provide the school with their valid enhanced DBS details.

All kitchen staff have to provide the school with their valid enhanced DBS details. It is the responsibility of the Catering Contractor to carry out the necessary checks.

All kitchen staff's safer recruitment records are included in the school's Single Central Record.

All cleaning staff have to provide the school with their valid enhanced DBS details. It is the responsibility of the Cleaning Contractor to carry out the necessary checks.

All cleaning staff's safer recruitment records are included in the school's Single Central Record.

All Breakfast Club and After School Club Personnel have to provide the school with their valid enhanced DBS details. It is the responsibility of the Extended School Providers to carry out the necessary checks.

All Extended School Personnel's safer recruitment records are included in the school's Single Central Record.

It is the responsibility of the Business Manager to make sure all enhanced DBS checks are current and recorded.

#### 7.10 Volunteers E.g. Parents/Carers

Under no circumstances should a volunteer in respect of whom no checks have been obtained be left unsupervised or allowed to work in regulated activity.

We will obtain an enhanced DBS certificate with barred list check for all volunteers in regulated activity who will regularly teach or look after children on an unsupervised basis or provide personal care on a one-off basis.

According to the DfE guidelines there is no requirement to request an enhanced DBS check for new or existing volunteers not in regulated activity.

However the school may still choose to request one as they judge necessary but may not request a check of the barred list.

If a volunteer is not engaging in regulated activity and is therefore supervised at all times, e.g. a parents accompanying their children on a school trip, the school will undertake a risk assessment and use their professional judgement and experience, when deciding whether to seek an enhanced DBS check. A barred list check is legally not allowed under these circumstances.

#### 7.11 School Governors

Governing bodies must apply for an enhanced criminal records certificate for any governor who does not already hold one. They must do this by 1 September 2016 where a governor was elected

before 1 April 2016 and within 21 days of appointment or election if a governor is elected or appointed after 1 April 2016.

All new governors will be asked to declare their overseas history and where necessary, complete a risk assessment. Existing governors will also/will not be required to complete an overseas criminal history risk assessment in line with our agreed school procedures.

## 7.12 Contractors

The Receptionist and /or a member of the Premises Team will always check the identity of contractors upon their arrival in the school.

Contractors and contractors' employees for whom an appropriate DBS check has not been undertaken will be supervised by a member of the Premises Team, if they will have contact with children.

If a self-employed contractor is working at the school and will have unsupervised contact with children, the school will obtain a DBS check, as self-employed people are not able to make an application directly to the DBS on their own account.

## 7.13 General Visitors to the School

We will not request DBS checks and barred list checks, or ask to see DBS certificates, for general visitors, e.g. children's relatives attending events in the school, etc.

# 8. Staff Conduct

---

## 8.1 Training

Staff will be supported to recognise the signs and symptoms of neglect, physical, emotional and sexual abuse. New/temporary staff will receive training as part of their induction process. Every member of staff will receive a copy of this Safeguarding Policy as well as the Staff Code of Conduct, Keeping Children Safe in Education (2018) – Part One and Annex A and will need to sign to confirm that they have read and understood the documents.

All staff will receive child protection training at least annually with a particular focus on recognising signs of abuse, managing a disclosure as well as recapping monitoring and reporting procedures of abuse and suspected abuse. In addition, staff will receive regular training updates about safeguarding related issues.

The safeguarding training of third party staff/contractors will be verified and if necessary, further training may be given as part of the induction process. Third party colleagues will also sign the Staff Code of Conduct. Should a child or a member of staff be concerned about another member of staff's conduct in relation to child protection then procedures are in place. All school staff should take care not to place themselves in a vulnerable position with a child. They should strictly adhere to the Department for Education and Skills (DfES) guidelines on teachers' behaviour and the school's policies.

## 8.2 Safer Working Practice

We make use of the DCSF document 'Guidance for Safer Working Practice for Adults who work with Children and Young People in Education Settings.' March 2009 as the basis for our Code of Conduct. All staff are expected to follow the Brent Knoll School Staff Code of Conduct and the expectations set out in the staff handbook (see Code Of Conduct and Staff Handbook).

Staff should take care not to place themselves in a vulnerable position with a child. It is always advisable for adults working with individual children to do so in view of other adults. If staff anticipate being in a situation that could be open to misinterpretation they should alert a senior manager in advance and inform the child's parent or carer. Staff should escort children of the same sex to the toilet but are not expected to be involved with toileting, unless the child has an additional need that has been brought to their attention by the parent/guardian and a strategy agreed in writing. We recognise that physical touch between adults and children in relation to the activity being provided is acceptable in public places.

## 8.3 Managing Allegations Against Staff

We understand that a pupil may make an allegation against a member of staff. If such an allegation is made:

The member of staff receiving the allegation will immediately inform the Head Teacher or the most senior DSL if the Head Teacher is not present.

The Head Teacher or the senior teacher on all such occasions will discuss the content of the allegation with the Local Authority Designated Officer (LADO) for Child Protection. If the allegation made to a member of staff concerns the Head Teacher, the person receiving the allegation will immediately inform the Chair of Governors who will consult as above, without notifying the Head Teacher first.

The School will follow the Lewisham Local Authority procedures in the LADO protocol, updated in May 2018, for managing allegations against staff, and statutory guidance 'Keeping Children safe in Education.' (2018)

Individuals who are the subject of allegations should be informed of these as soon as possible, as should the parents and carers of any children involved. However, every effort must be taken to maintain confidentiality, in order to comply with the reporting restrictions in the Education Act 2011.

Suspension of the member of staff against whom an allegation has been made needs careful consideration, and we will consult the LADO for Child Protection, or the School's Personnel Officer.

The name of any member of staff considered not suitable to work with children will be given to the Department for Education Misconduct Team, with the advice and support of Education Personnel and in accordance with the Barring Regulations.

Any child making such an allegation will be treated sensitively and made to feel safe and listened to. If there are any immediate concerns of safety action must be taken to remove the child from harm. Parents or carers of a child or children involved should be told about the allegation as soon as possible if they do not already know of it.

## 8.4 Whistleblowing

We recognise that children cannot be expected to raise concerns in an environment where staff fail to do so. All staff should be aware of their duty to raise concerns about the attitude or actions of colleagues in relation to children. If necessary, they should speak to the designated Child Protection Governor (Chair of Governors) or the LA Designated Child Protection Officer (LADO) via the DSL, if they are not the same person – see Whistleblowing Policy.

The NSPCC runs a whistleblowing helpline on behalf of the Home Office, the number is 0808 800 5000.

## 9. General Safeguarding

---

### 9.1 Health and Safety

Our Health and Safety policy, set out in a separate document, is reviewed annually by the governing body. It reflects the consideration we give to the protection of our children both within the school environment and when away from the school when undertaking school trips and visits. (See separate policy – Health and Safety)

### 9.2 Attendance

Our policy on attendance is set out in a separate document and is reviewed annually by the governing body. Brent Knoll School recognises that poor attendance can be an indicator that a child is experiencing abuse. The attendance officer (Grace Cook) and senior leadership team monitor attendance weekly and report concerns to the Attendance & Welfare Officer at regular meetings.

(See separate policy – Pupil Attendance)

### 9.3 E-Safety and Digital Safeguarding

We ensure pupils at Brent Knoll School are protected while using digital technologies at the school. The school is committed to including digital technologies, in particular, internet use, in our curriculum. In so doing we recognise the inherent risks posed by this useful learning tool. Full compliance with the school Digital Safeguarding policy will mitigate these risks and help to ensure pupils are safe online.

[\(See separate policy – E-Safety\)](#)

### 9.4 Anti-Bullying Policy

Our policy on anti-bullying, including cyber-bullying, is set out in a separate document and is reviewed annually by the governing body. We expect staff to acknowledge that to allow or condone bullying, constitutes a lack of duty of care, which may lead to consideration under child protection procedures.

This policy is written in line with advice and statutory guidelines set out in the DfE guidance [Preventing Bullying](#), in July 2017 and [Approaches to Preventing and Tackling Bullying](#), June 2018.

[\(See separate policy – Anti-bullying\)](#)

### 9.5 Physical Intervention Policy

Our policy on physical intervention by staff is set out in a separate document (as well as also being referred to in the Behaviour for Learning and Anti-bullying policies) and is reviewed annually by the governing body. We acknowledge that staff must only ever use physical intervention as a last resort, and that at all times it must be the minimum force necessary to prevent injury to themselves, another person or property. Individual Risk Assessments are completed for particular pupils who have a

higher likelihood of needing physical intervention and/or restraint and staff who work closely with these students are provided with additional Positive Handling training.

## 9.6 School Visits

We have clear protocols in place to ensure the safety of children whilst on school trips (see visits and trips policy). These include:

- Visit procedures to be documented by staff and agreed with the Educational Visits Coordinator.
- A briefing for parents going on the trips including detailed information about complying with safeguarding responsibilities and what to do if a child discloses to them
- Defined roles and responsibilities for school staff
- Risk assessments
- DBS/barred list checks for parents/carers where appropriate

## 9.7 Looked After Children

Our Head Teacher and our School Home Support Worker (SHSW) are responsible for Looked After Children and ensure that appropriate staff have the information they need in relation to a child's looked after legal status and contact arrangements with birth parents or those with parental responsibility. The Head Teacher and the Inclusion Leader also have information about the child's care arrangements and the levels of authority delegated to the carer by the authority looking after him/her.

The Headteacher and SHSW for Looked After Children has details of the child's social worker and the name of the virtual school head in the authority that looks after the child.

The Safeguarding Lead is the designated Governor for Looked After Children (CLA).

A separate policy sets out our systems and procedures in relation to CLA, which has been written with reference to the two statutory DfE guidance documents, 'Designated Teacher for looked after and previously looked after children' and 'Promoting the education of looked after and previously looked after children' released in February 2018.

## 9.8 Children Missing From Education

All children, regardless of their circumstances, are entitled to a full time education which is suitable to their age, ability, aptitude and any special educational needs they may have. Local authorities have a duty to establish, as far as it is possible to do so, the identity of children of compulsory school age who are missing education in their area. A child going missing from education is a potential indicator of abuse or neglect. School and college staff should follow the school's or college's procedures for dealing with children that go missing from education, particularly on repeat occasions, to help identify the risk of abuse and neglect, including sexual exploitation, and to help prevent the risks of their going missing in the future.

Brent Knoll School places a great emphasis on regular and punctual attendance and we promptly follow up any unexplained absence. It is essential that all staff are alert to signs to look out for and the individual triggers to be aware of when considering the risks of potential safeguarding concerns such as travelling to conflict zones, FGM and forced marriage. Brent Knoll School has both an admission register and attendance register as required by law. All pupils are placed on both registers. Brent Knoll School informs and seeks guidance from the Local Authority before any child is deleted from the admission register. No child is deleted unless there are appropriate checks



conducted to ensure that the child is not at risk from being missing from education. A child may be deleted from the admission register for the following reasons.

- The child has been taken out of school by their parents and is being educated outside the school system e.g. home education;
- The child ceased to attend the school and no longer lives within reasonable distance from the school at which they are registered;
- The child has been certified by the education medical officer as unlikely to be in a fit state of health to attend school before ceasing to be of compulsory school age, and neither he/she nor his/her parent has indicated the intention to continue to attend the school after ceasing to be of compulsory school age;
- Are in custody for a period of more than four months due to a final court order and the Headteacher does not reasonably believe that they will be returning to the school at the end of that period; or,
- Have been permanently excluded. The Local Authority must be notified when the school is to delete a pupil from its register under the above circumstances. This should be done as soon as the grounds for deletion are met, but no later than deleting the pupil's name from the register. It is essential that schools comply with this duty so that Local Authorities can, as part of their duty to identify 8 regulation 4 of the Education (Pupil Registration) (England) Regulations 2006 9 Regulation 12(3) of the Education (Pupil registration) (England) Regulations 2006 14 children of compulsory school age who are missing education, follow up with any child who might be in danger of not receiving an education and who might be at risk of abuse or neglect.

Brent Knoll School informs the Local Authority of any pupil who fails to attend school regularly, or has been absent without the school's permission for a continuous period of 10 school days.

#### 9.9 Children with Special Educational Needs and Disabilities

For a variety of reasons, children with additional needs face an increased risk of abuse and neglect, therefore adults are expected to take extra care to interpret correctly apparent signs of abuse or neglect. Indications of abuse will be reported as for other pupils.

Children and young people with special educational needs and disabilities can face additional safeguarding challenges because:

- There may be assumptions that indicators of possible abuse such as behaviour, mood and injury relate to the child's disability without further exploration;
- Children with SEN and disabilities can be disproportionately impacted by things like bullying without outwardly showing any signs; and
- Difficulties may arise in overcoming communication barriers

At Brent Knoll School where all pupils might need more support to be kept safe or to keep themselves safe and systems for monitoring this are considered in Individual plans and through communication strategies and curriculum implementation.

#### 9.10 Fabricated or Induced Illness

Fabricated or induced illness (FII) is a rare form of child abuse. It occurs when a parent or carer, usually the child's biological mother, exaggerates or deliberately causes symptoms of illness in the child.

FII is also known as 'Munchausen's syndrome by proxy' (not to be confused with Munchausen's syndrome, where a person pretends to be ill or causes illness or injury to themselves).

FII covers a wide range of symptoms and behaviours involving parents seeking healthcare for a child. This ranges from extreme neglect (failing to seek medical care) to induced illness.

Behaviours in FII include a parent or other carer who:

- persuades healthcare professionals that their child is ill when they're perfectly healthy
- exaggerates or lies about their child's symptoms
- manipulates test results to suggest the presence of illness – for example, by putting glucose in urine samples to suggest the child has diabetes
- deliberately induces symptoms of illness – for example, by poisoning her child with unnecessary medication or other substances

If you suspect that a parent/carer may be fabricating or inducing illness in their child, you should not confront them directly. It's unlikely to make the person admit to wrongdoing, and it may give them the opportunity to dispose of any evidence of abuse. You must immediately report any concerns to the DSL using the concerns form.

Please see further guidance on the DfE website via the link below:

[FII guidance](#)

## 9.11 Private Fostering

A private fostering arrangement is one that is made privately (without the involvement of a local authority) for the care of a child under the age of 16 years (under 18, if disabled) by someone other than a parent or close relative, in their own home, with the intention that it should last for 28 days or more. (Please refer to the Private Fostering Policy for more details).

A close family relative is defined as a 'grandparent, brother, sister, uncle or aunt' and includes half-siblings and step-parents; it does not include great-aunts or uncles, great grandparents or cousins.

Parents and private foster carers both have a legal duty to inform the relevant local authority at least six weeks before the arrangement is due to start; not to do so is a criminal offence.

Whilst most privately fostered children are appropriately supported and looked after, they are a potentially vulnerable group who should be monitored by the local authority, particularly when the child has come from another country. In some cases privately fostered children are affected by abuse and neglect, or be involved in trafficking, child sexual exploitation or modern-day slavery.

Schools have a mandatory duty to report to the local authority where they are aware or suspect that a child is subject to a private fostering arrangement. Although schools have a duty to inform the local authority, there is no duty for anyone, including the private foster carer or social workers to inform the school. However, it should be clear to the school who has parental responsibility.

School staff should notify the DSL when they become aware of private fostering arrangements. The designated safeguarding lead will speak to the family of the child involved to check that they are aware of their duty to inform the LA. The school itself has a duty to inform the local authority of the private fostering arrangements.

A referral should be made to Children's Social Care in writing using Lewisham's referral form. The referral should have as much information as possible, including full details of all children concerned and their parents/carers/those with PR and any information about how these children came to be in

their current situation. In some cases you may not have been provided with all the details so it is important that you discuss the referral with the carers in order to obtain them. However, if the information is not forthcoming, the referral should not be delayed. Referrals should be made online at: [www.lewisham.gov.uk/MASH](http://www.lewisham.gov.uk/MASH).

Once notified about a private fostering arrangement, the local authority is required to assess the home to ensure that is suitable. If it is happy with the arrangements, then it is required to arrange a visit once every six weeks for the first year and then at three-monthly intervals whilst the placement continues. Children's Social Care will be appointing a dedicated worker to work with private fostered children. Details will be provided as soon as possible. This worker will be available to offer advice and assistance if required.

## 9.12 Separated Parents

The definition of a parent for school purposes is much wider than for any other situation. The Education Act 1996 defines a parent as:

- All natural parents, including those that are not married;
- Any person who has parental responsibility but is not a natural parent e.g. a legally appointed guardian or the Local Authority named in a Care Order;
- Any person who has care of a child i.e. a person with whom the child resides and who looks after the child irrespective of the relationship

Who has "Parental Responsibility"? (The Children Act 1989)

Having parental responsibility means assuming all the rights, duties, powers, responsibilities and authority that a parent of a child has by law. People other than a child's natural parents can acquire parental responsibility through:

- Being granted a Residence Order
- Being appointed a Guardian
- Being named in an Emergency Protection Order (although parental responsibility in a such a case is limited to taking reasonable steps to safeguard or promote the child's welfare)
- Adopting a child.

If the parents of a child were not married to each other when the child was born, the mother automatically has parental responsibility; however, the father only has parental responsibility from 1st December 2003 and by jointly registering the birth of the child with the mother. He can, however, subsequently acquire parental responsibility by various legal means. Brent Knoll School must act in accordance with the law with respect to parental responsibility, and the school's duties and processes are clearly outlined in our "Separated Parents Policy".

## 9.13 Photography and Images

To protect children we will:

- Seek parental consent for photographs to be taken or published (for example on our website or in newspapers and/or publications)
- Only use the school's equipment
- Only take photos and videos of children to celebrate achievement
- Use only the child's first name with an image
- Ensure that the children are appropriately dressed

- Encourage children to tell us if they are worried about any photographs that are taken of them

Parents that are taking photographs at school assemblies and other productions or school trips are instructed that these are to be for personal use only and are not to be shared on social media.

#### 9.14 Commissioned Extended School Provision and Lettings

Section 11 of the Children Act 2004 places duties on a range of organisations and individuals to ensure their functions, and any other services that they contract out to others, are discharged having regard to the need to safeguard and promote the welfare of children. (Chapter 2 - Working Together 2018)

In relation to extended school provision and lettings, these include:-

- A clear line of accountability for the commissioning and /or provision of services designed to safeguard and promote the welfare of children
- A designated professional lead for safeguarding
- Safe recruitment practices for individuals whom the organisation will permit to work regularly with children
- Clear policies, in line with those from the LSCB for dealing with allegations against people who work with children.

'Employers are responsible for ensuring that their staff are competent to carry out their responsibilities for safeguarding and promoting the welfare of children and creating an environment where staff feel able to raise concerns and feel supported in their safeguarding role.' Working Together 2018. Where any extended service is directly commissioned by Lewisham Council, they will be responsible for the safeguard.

Where extended school provision is offered directly under the supervision or management of school staff, for example an after school sports club led by a member of school staff, the school's safeguarding arrangements will apply.

Where services or activities are provided separately by another body, the Governing Body should seek assurance that the body concerned has appropriate policies and procedures in place in regard to safeguarding children and child protection and there are arrangements to liaise with the school on these matters where appropriate.

Schools and colleges should have arrangements in place with extended school providers and contractors to make sure that anyone who will be coming onto school site and working with children has been subject to the appropriate level of DBS check and safer recruitment processes.

#### 9.15 Drop-off and Collection Procedures

The school procedures covering the collection of pupils at the end of school are to ensure children are safe and in the care of the parent or an authorised adult by 3.30pm. The school must have the full contact details of parents/carers and other adults [such as grandparents] authorised by the parent/carer to collect their child. It is the parent/carer's responsibility to ensure contact details are up to date and that they have sufficient authorised adults for a range of emergencies. Please refer to the school's "Drop-off and Collection Procedures" for details on the protocols in place for the collection of children.

The responsibility is on parents/carers to complete these arrangements every day, including the responsibility to make their own arrangements with their named authorised adult to collect their child/children if they are going to be late for any reason.

In the event of an emergency the school expects the parent/carer to make appropriate arrangements so the child/children are collected by 3.30pm by an authorised adult. It should be a rare occasion when there is a need to call the school to inform them that a child/children will be collected late.

#### 9.16 Mental Health/Self-Harm

Mental health problems affect about 1 in 10 children and young people. They include depression, anxiety and conduct disorder, including self-harm, and are often a direct response to what is happening in their lives.

At Brent Knoll School, as a minimum, all staff will receive regular training about recognising and responding to mental health issues as part of their regular child protection training in order to enable them to keep students safe.

We will host relevant information on our virtual learning environment for staff who wish to learn more about mental health. The [MindEd](#) learning portal provides free online training suitable for staff wishing to know more about a specific issue.

Recent research also indicates that up to one in ten young people in the UK engage in self-harming behaviours, and that this figure is higher amongst specific populations, including young people with special educational needs. School staff can play an important role in preventing self-harm and also in supporting students, peers and parents of students currently engaging in self-harm.

School staff may become aware of warning signs which indicate a student is experiencing difficulties that may lead to thoughts of self-harm or suicide. These warning signs should always be taken seriously and staff observing any of these warning signs should seek further advice from the DSL.

#### 9.17 Exclusions

Decisions to exclude a child are not taken lightly and the final decision will always be made by the Headteacher. In line with the recent DfE statutory guidance, 'Exclusion from maintained schools, academies and pupil referral units in England', September 2017, when the school is considering excluding, either fixed term or permanently, a vulnerable pupil and / or a pupil/student who is the subject of a child protection plan or where there is an existing child protection file, we will call a multi-agency risk-assessment meeting prior to making the decision to exclude. In the event of a one-off serious incident resulting in an immediate decision to exclude, the risk assessment must be completed prior to convening a meeting of the Governing Body.

#### 9.18 Searching Screening and Confiscation

Screening is not carried out at the site. Searching and confiscation is not routinely carried out but where there is evidence that it may be necessary the HT or DHT will authorise the action. In this event the DfE: [Screening, searching and confiscation – Advice for Headteachers, staff and Governing Bodies 2018](#) will be the framework through which staff conduct the process.

#### 9.19 Contextual Safeguarding

Schools have been identified as sites in which young people can experience and/or be safeguarded from abuse and violence. From experiences of sexual harassment and sexual violence through to physical assaults, relationship-based abuse, bullying and grooming into exploitative networks, young people have told practitioners, researchers and journalists about risks they have faced in educational settings.

As such it is critical that when young people experience abuse and violence and this is in some way associated to their school environment or school relationships – that the school itself features within the process of assessment and intervention. If we want to address the factors that cause abuse, or provide an opportunity for abuse to occur, then these factors needs to be identified explored and addressed – and school assessments is one way to achieve this.

School assessments uncover risks and strengths within school contexts, that are associated to young people's experiences of abuse.

A school assessment draws on aspects of the environment to build a picture of how the school can be safer for young people. A range of methods will be used to gather this information including:

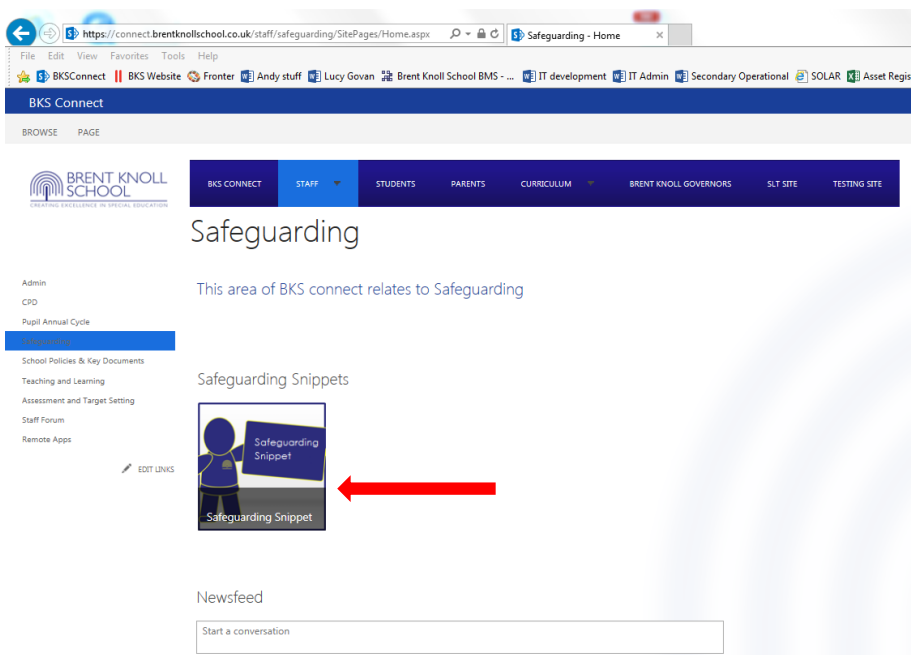
- Speaking to young people
- Student and parent surveys
- Speaking with staff
- Reviewing behaviour logs
- Observing the school environment

At Brent Knoll School we take contextual safeguarding very seriously. If colleagues have concerns or become aware of circumstances within school where young people are currently experiencing or are at risk of harm, please report to the DSL using the concerns form. A decision will then be made by the Senior Leadership Team about the potential need to carry out a school assessment.

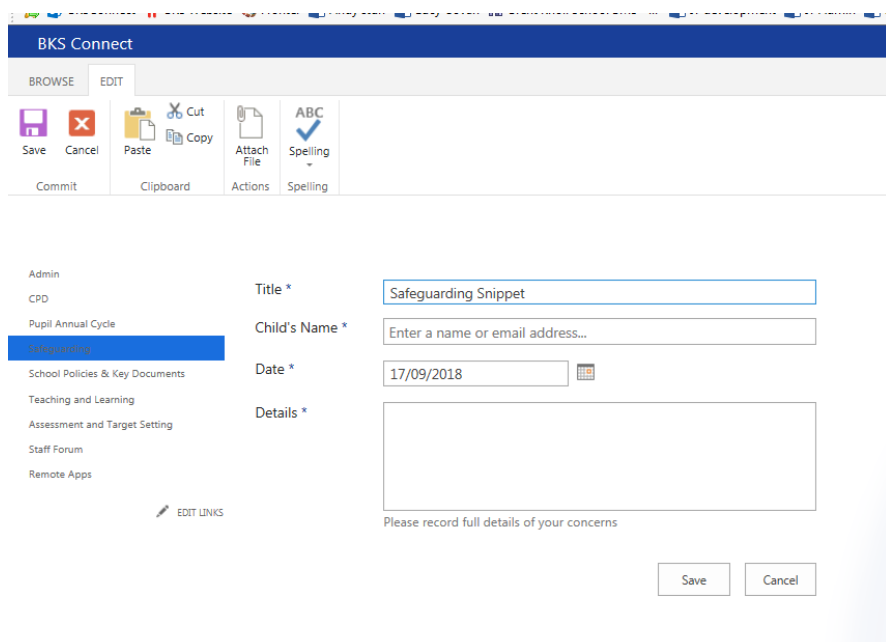
## Reporting a Concern Form

For completion by staff or volunteers when they become aware of child welfare concerns in accordance with government guidance and the child protection policy. The Designated Safeguarding Lead will monitor concerns and report where appropriate to Children's Social Care if a child is deemed at risk of significant harm. This information will be disclosed only to those staff who need to know for the purposes of child protection. Concerns should usually be shared with parent/child, unless to do so may place a child/ren at increased risk of harm (if in doubt about this, the DSL should consult with Children's Social Care).

The form, accessed through the 'Safeguarding' section of BKSConnect should be opened and the details inserted. This image shows the safeguarding concern 'button'



The image below shows the opened 'button and the fields that need completing. As you have logged on to access the 'button' it recognises who you are please note if you are entering information on your log in on behalf of someone else



**Section 2** (For completion by Designated Safeguarding Lead or other appropriate Senior Teacher)

N.B. Under no circumstances should a member of staff ask a child to remove clothing to see a suspected injury. If a child has described where an injury is, or it is clearly visible without needing to remove outer clothing, please complete a 'Body Map' form available [here](#). Hard copies are available from the office.

Appendix 2

---

**Safeguarding Overview Sheet**

**CHILD PROTECTION RECORD –**

Date file opened:		
State any previous names		
D.O.B		
Status: CIN, CP, CIC		
Address:		
Parent/Carer Name (1):		
Parent/Carer Contact No:		
Parent/Carer Name (2):		
Parent/Carer Contact No:		
Parent Consent (If a referral is being made/has been made to CSC/Early Help was consent obtained?)	<b>Yes</b>	If consent was not obtained, please state brief reasons why below:
	No	



Other family members: (include full name, relationship, if under 18 include age and school where known)			
Name	Relationship	DOB (if known)	School
Any other child protection files held in school relating to another child closely connected to this child?: (include full name, relationship, if under 18 include age and school where known)			
Name	Year/Group	DOB (if known)	Date of initial referral
Name and contact number of key workers: ( E.g. social worker/CAMHS etc. include full name, contact details and date of engagement – Continue on separate cover sheet if necessary)			
<b>Name:</b>		Contact No.:	
Role/Organisation:		Contact Email:	
Date From:		Date Ended:	
<b>Name:</b>		Contact No.:	
Role/Organisation:		Contact Email:	
Date From:		Date Ended:	
<b>Name:</b>		Contact No.:	
Role/Organisation:		Contact Email:	
Date From:		Date Ended:	
Name and contact details of GP:	Name:	Address	
	Tel:	Fax:	

## CHILD PROTECTION RECORD

NAME OF CHILD:

D.O.B.			
DATE	EVENT	ACTION (Ensure the action is clearly written and the initials of is responsible for each event is listed	Updates forwarded Y/N

Appendix 3

---

What to do if you're worried a child is being abused or neglected

[Safeguarding Flowchart](#)