

## **Occupational Therapy at Brent Knoll**

### **What is Occupational Therapy?**

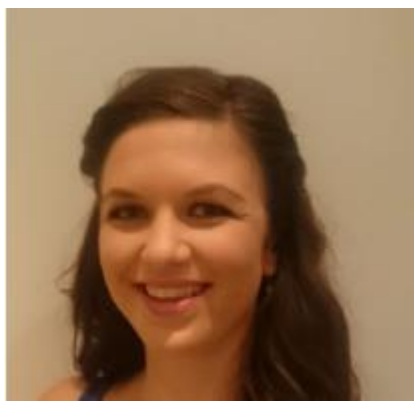
Occupational therapy provides assessment, intervention, support and care for children and young people at Brent Knoll school who have difficulties with skills needed for self-care, leisure and learning as part of the school day.

The aim is to support children in being able to transfer these skills into the home.

Occupational therapists work with children, parents/carers, school staff and other health professionals. Occupational therapy aims to maximise a child's ability to participate as fully as possible in school and home life, alongside their peers and to develop skills in preparation for adult life.

### **Who provides Occupational Therapy?**

Occupational Therapy services are provided by two NHS Occupational Therapists.



Kerry Brown



Katie Kelly

### **School Contacts**

The Occupational Therapy Service at the school is coordinated by Gaynor Eames (primary) and Paul Shaw (secondary).

### **How does Occupational Therapy work at Brent Knoll School?**

The Occupational Therapists work across both primary and secondary departments at Brent Knoll School. Therapists work collaboratively with teaching staff and offer assessment and intervention which might be one to one, in small groups or delivered to a whole class.

In addition, the Occupational Therapists provide training for school staff as well as opportunities to link with parents. This supports understanding and enables us to best meet the needs of the students together as part of a universal service.

The occupational therapy service in Brent Knoll school works 'with and through others' (collaborating and sharing information and strategies with school staff) allowing 'little and often' input to all children to meet their needs at a targeted and specialist level.

The service provides an 'episode of care' model. This allows children to have a period of consolidation after an episode of direct contact, addressing one specific skill at any one time.